

# QUIET COSMOS

A / W 2024

# OUR CONCEPT

Built on classic knitwear fashions and detailed with lived-in, contemporary style, and drawing on inspiration from the natural world. Finely balancing simplicity with a unique edge to allow the complexity and depth of human personality to be expressed.

Elevated   Contemporary   Understated

Quiet Cosmos A/W 2024



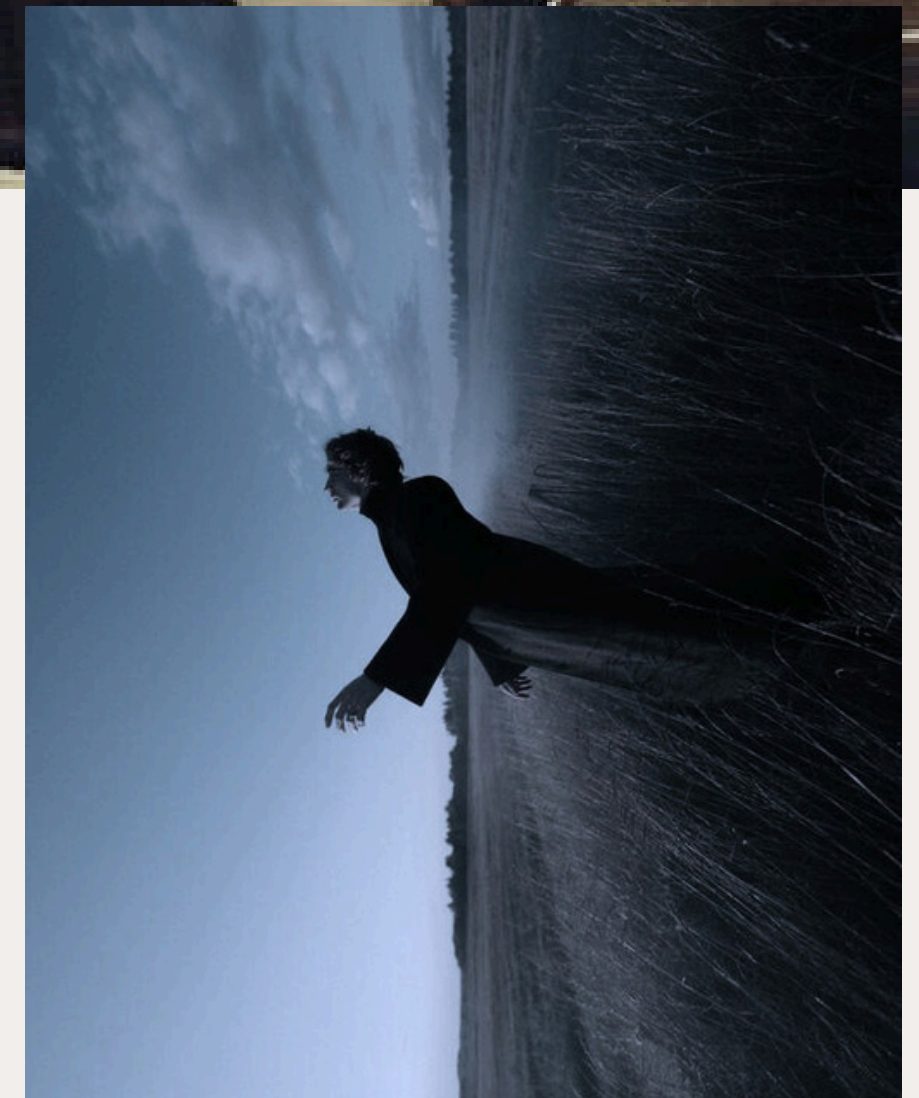
Quiet Cosmos A/W 2024

---

# OUR MARKET

- Women
- 20s-30s
- Working
- Urban
- Middle Class
- Looking for comfort, originality, and quality

Page 02







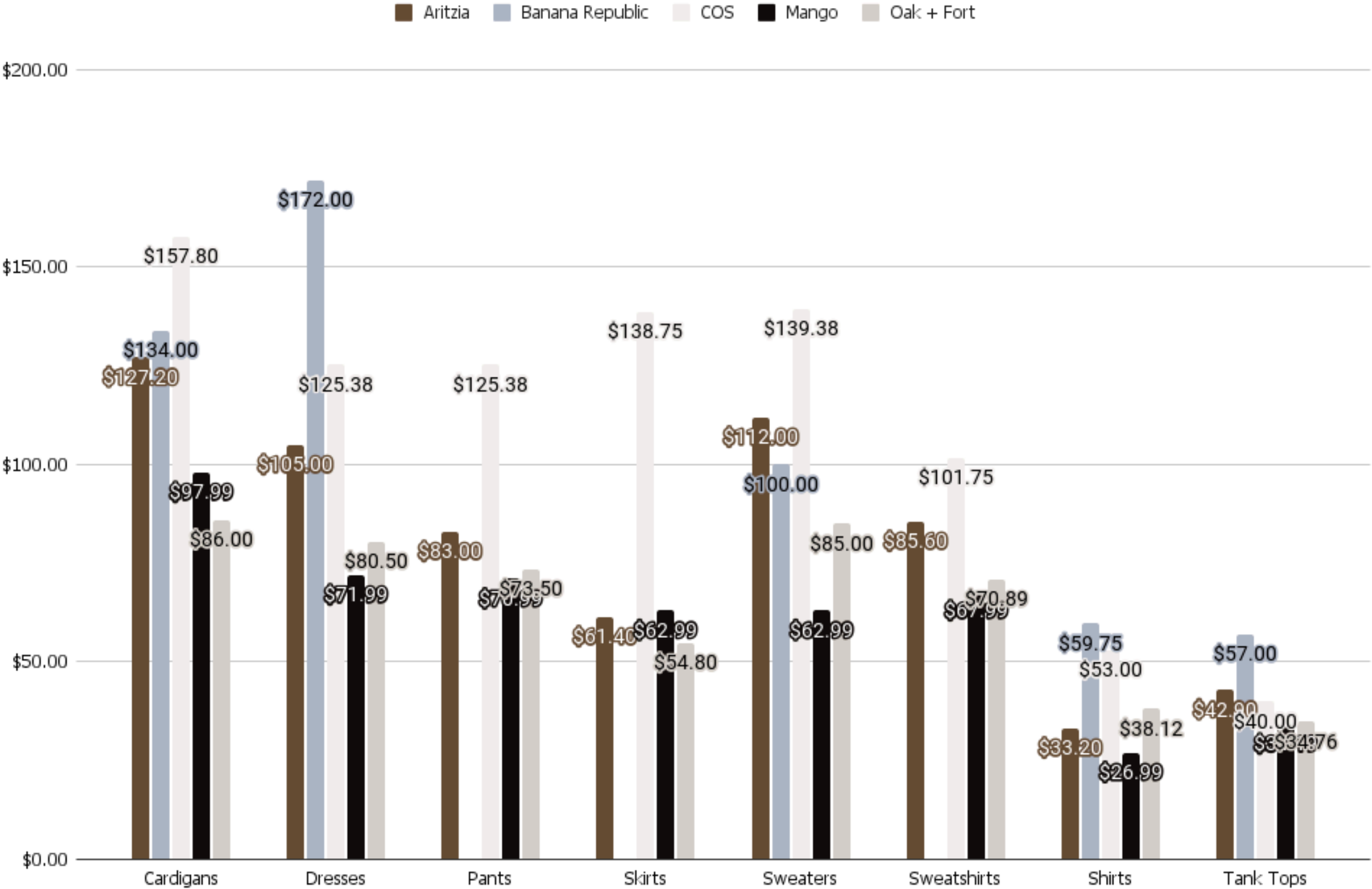
# OUR VISION

- **Modern Classics:** classic knitwear meets subtle contemporary styles
- **Multi-Purpose:** comfort meets function, can dress up or dress down
- **Long Life:** high quality pieces grounded in timeless styles that can be an investment
- **Cosmic Inspiration:** colors and textures inspired by geology from outer space
- **High Sense:** emphasis on textures and subtle colors



OUR  
COM  
PETI  
TION

Competition Price Points



BETTER

COS

BANANA REPUBLIC

ARITZIA

OAK + FORT

CLASSIC

TRENDY

MANGO

MODERATE

OUR  
MATRIX



	Cardigans	Dresses	Pants	Skirts	Sweaters
Avg. Comp	\$120.60	\$110.97	\$88.22	\$79.49	\$99.87
Quiet Cosmos	\$120.00	\$110.00	\$80.00	\$70.00	\$130.00

# OUR PRICE

# OUR MATERIALS

Page 07

## **Chunky Pebble Wool Knit**

wool blend  
\$24.99 / yd  
dry clean

Note: inside is brushed



## **Italian Virgin Wool Cable Knit**

virgin wool/lambswool blend  
\$30.75 / yd  
low cycle or hand wash



## **Stretch Knit Crepe**

95% polyester, 5% spandex  
\$14.99 / yd  
Machine Wash Gentle Cold,  
Non-Chlorine Bleach

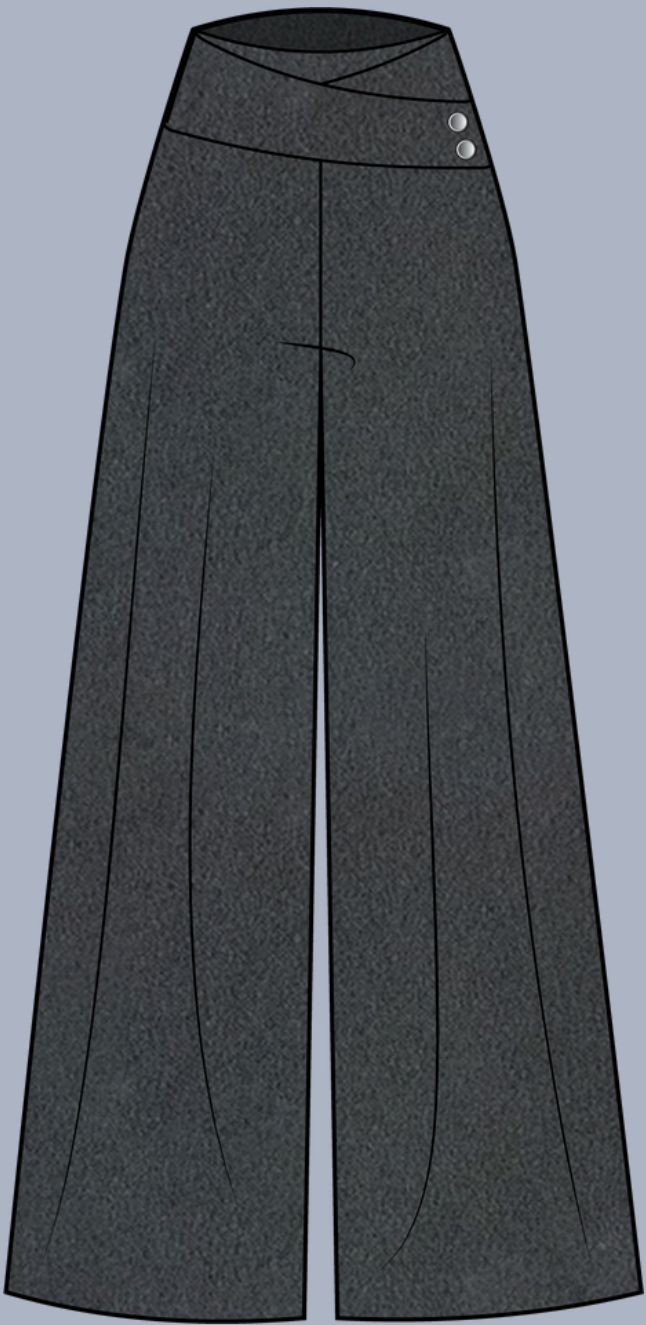


## **Deadstock Merino Wool Interlock**

100% merino wool  
\$36.00 / yd  
200% stretch crosswise, 70%  
lengthwise

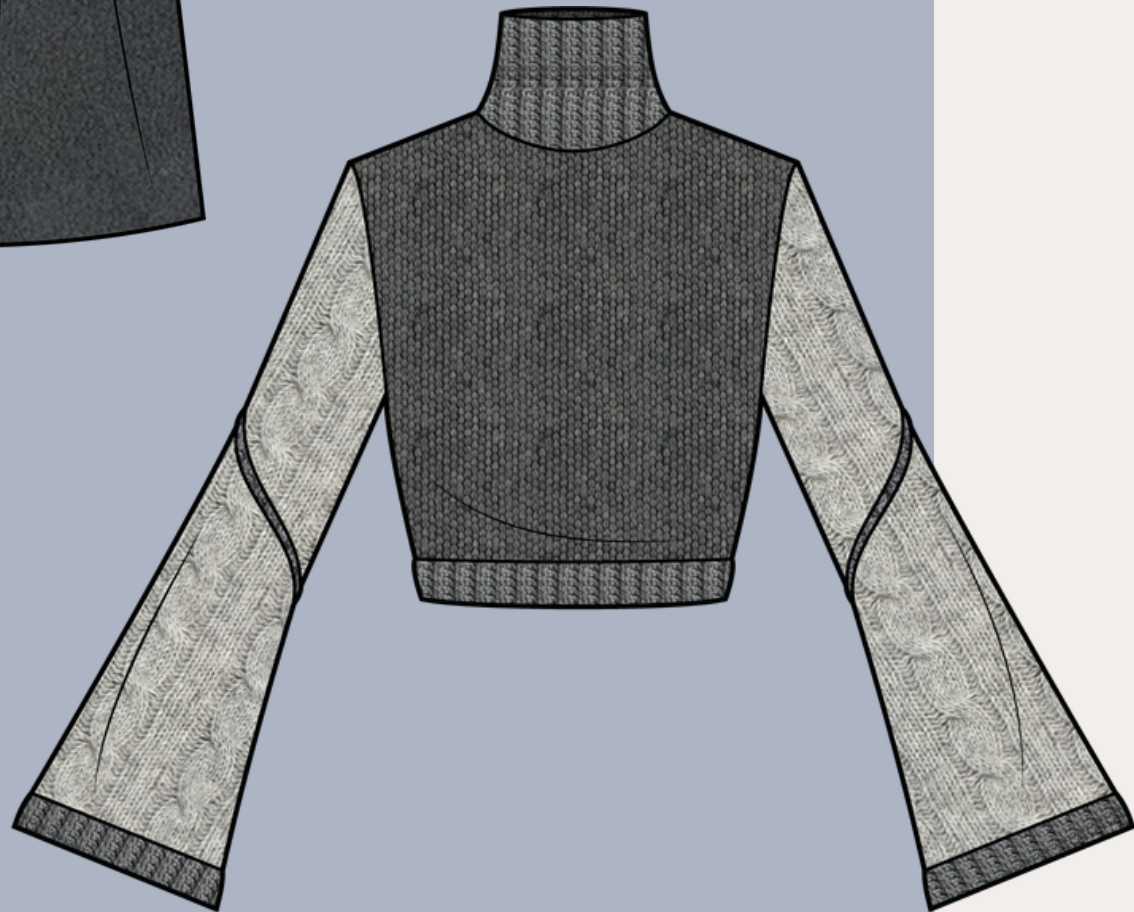






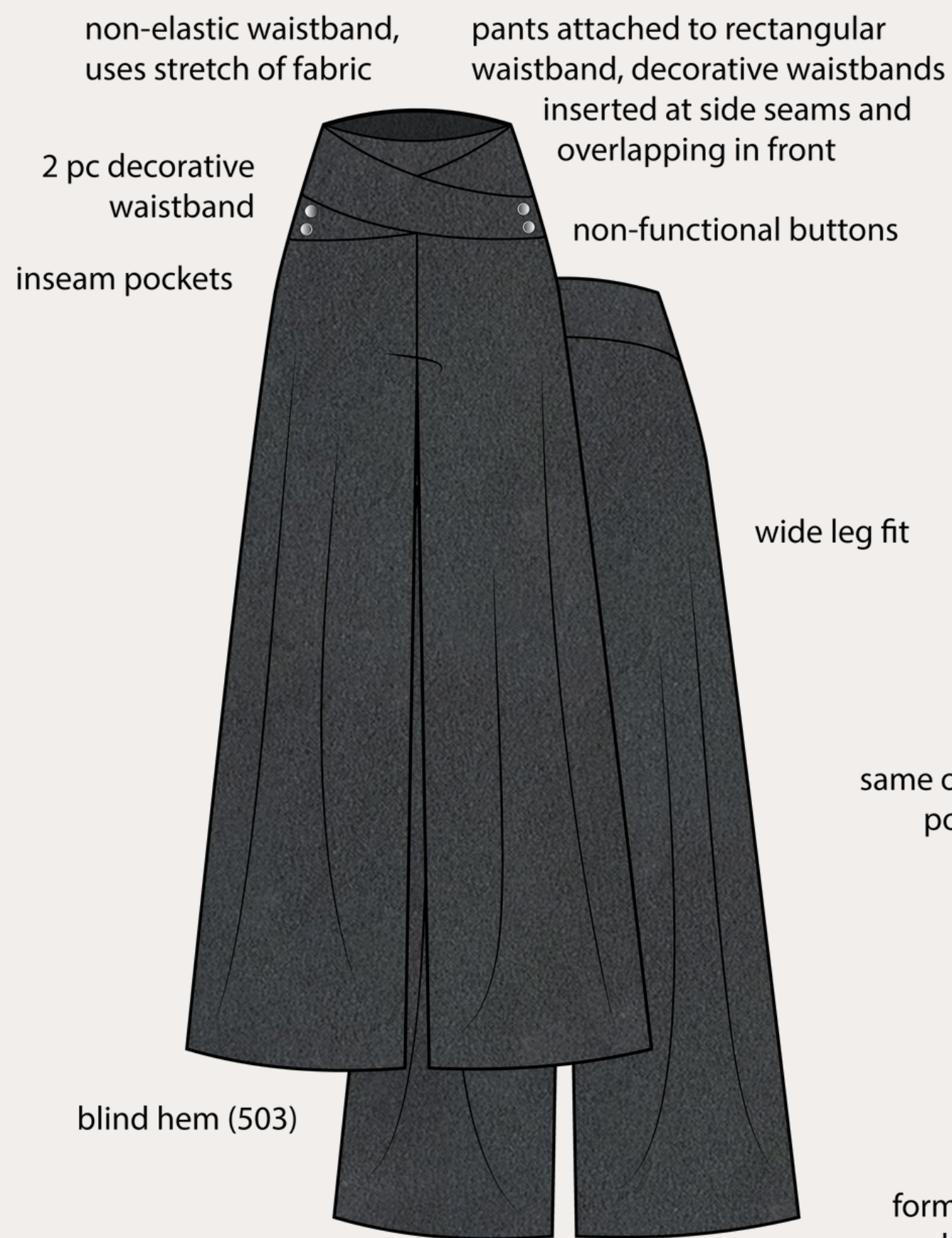
Quiet Cosmos A/W 2024

Page 08



# OUR COLLECTION



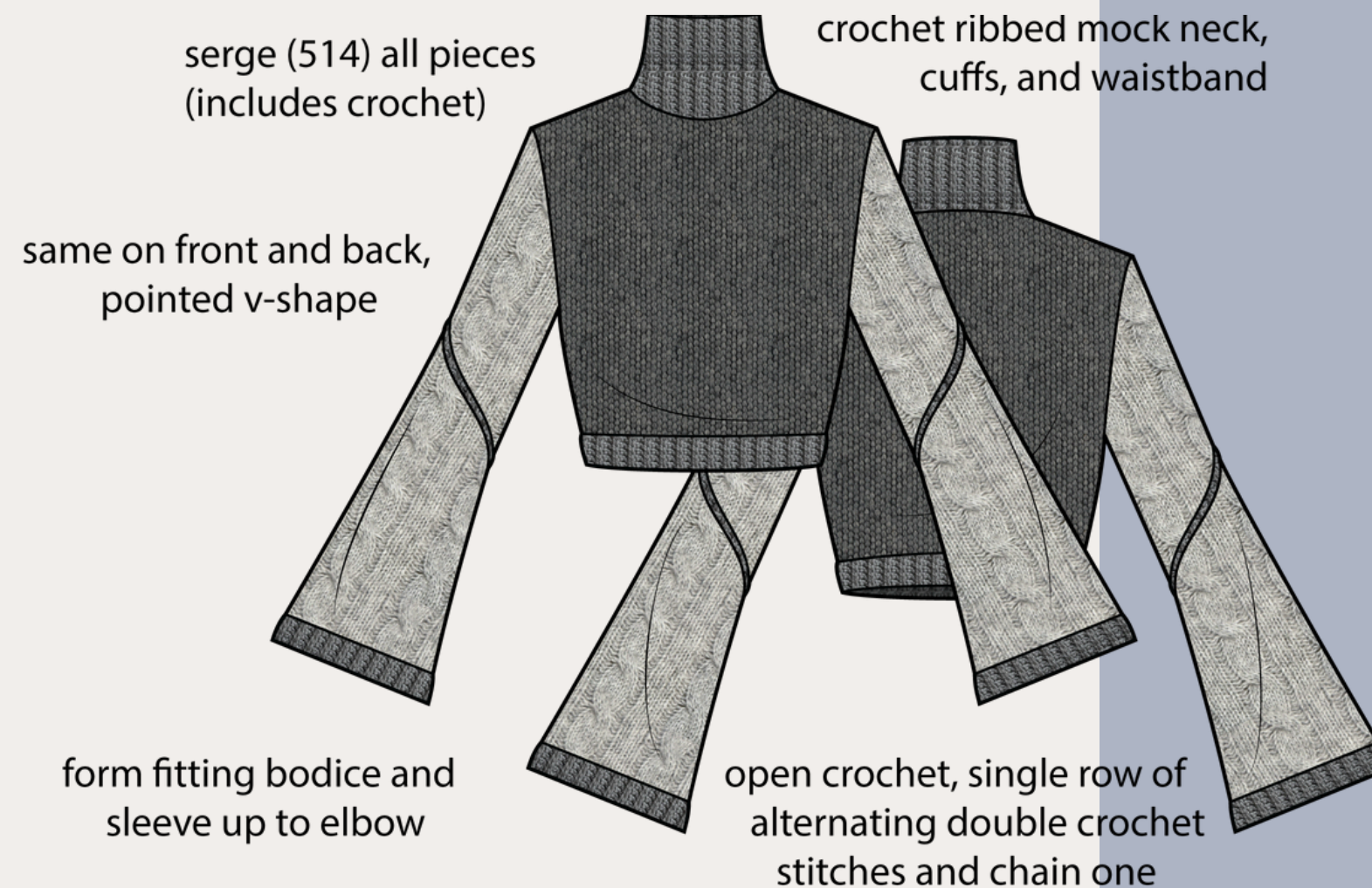


## Black Knit Crepe Pants

#1002

## Gray Colorblock Sweater

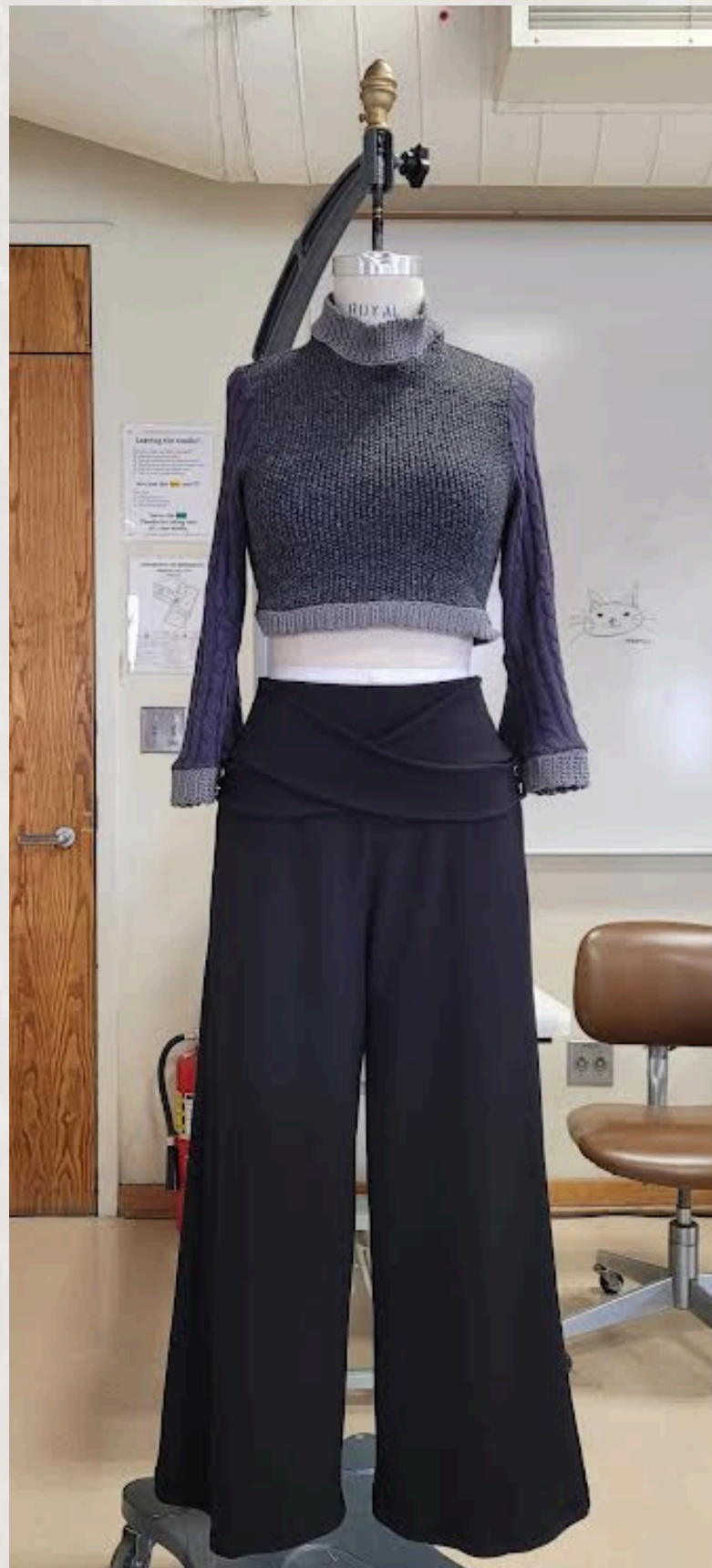
#1001



# OUR DESIGNS

Quiet Cosmos A/W 2024





Quiet Cosmos A/W 2024

# OUR SAMPLES

Page 10